

**CANADA AIR PILOT**

Effective 0901Z 30 SEPTEMBER 2004 to 0901Z 25 NOVEMBER 2004

**NOT FOR NAVIGATION**

SID (VECTOR)

**ST. JOHN'S TWO DEP (CYYT 2.)**



ST. JOHN'S INTL NEWFOUNDLAND

ST. JOHN'S NEWFOUNDLAND

VOT 114.8  
 ATIS 128.0 293.8  
 GND 121.9 275.8  
 TWR 120.6 236.6  
 DEP GANDER CENTRE  
 133.15 227.3

**CLIMB TO AND MAINTAIN 5000' ASL**

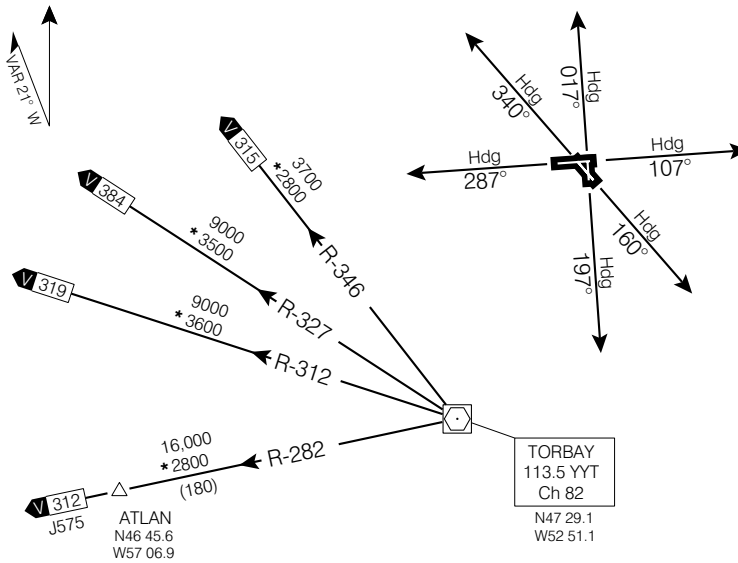


Chart not to scale

**DEPARTURE ROUTE DESCRIPTION**

- Rwys 02, 11, 16, 29 and 34:**
1. Climb rwy hdg for vectors.
  2. Maintain 5000' ASL or as assigned.

- Rwy 20:** Requires minimum climb gradient of 270 ft/NM to 900' ASL BPOC or SPEC VIS, visual climb to 900' ASL BPOC.
1. Climb rwy hdg for vectors.
  2. Maintain 5000' ASL or as assigned.

**COMMUNICATION FAILURE - TRANSPONDER MODE A/3 CODE 7600**

On recognition of communication failure 10 minutes or less after take-off and in IFR weather conditions proceed as follows:

1. Upon reaching last assigned altitude proceed directly on course;
2. Maintain last assigned altitude for 10 minutes after take-off; then
3. Climb to flight planned altitude, except in the case of Trans Atlantic departures, climb to the altitude specified in the Oceanic Clearance.

Note: If communication failure occurs more than 10 minutes after take-off, comply with the appropriate procedure for communication failure enroute.

**ST. JOHN'S TWO DEP (CYYT 2.)**

EFF 19 FEB 04 CHANGE: 2003 Mag Var

ST. JOHN'S NEWFOUNDLAND

ST. JOHN'S INTL NEWFOUNDLAND

NAD83

**NOT FOR NAVIGATION**

© 2004 Her Majesty The Queen in Right of Canada, Department of Natural Resources

Source of Canadian Civil Aeronautical Data: © 2004 NAV CANADA